

## *Ireland's Trade Performance 2003-2009*

<i>Year</i>	<i>Merchandise €bn</i>			<i>Services €bn</i>			<i>Total</i>	<i>Total</i>	<i>Overall</i>
	<i>Imports</i>	<i>Exports</i>	<i>Surplus</i>	<i>Imports</i>	<i>Exports</i>	<i>Deficit</i>	<i>Imports</i>	<i>Exports</i>	<i>Surplus</i>
<b>2003</b>	<b>47.865</b>	<b>82.076</b>	<b>34.211</b>	<b>48.223</b>	<b>37.133</b>	<b>-11.090</b>	<b>96.088</b>	<b>119.209</b>	<b>23.121</b>
<b>2004</b>	<b>51.105</b>	<b>84.409</b>	<b>33.304</b>	<b>52.625</b>	<b>42.424</b>	<b>-10.201</b>	<b>103.730</b>	<b>126.833</b>	<b>23.103</b>
yearly change	6.77%	2.84%		9.13%	14.25%		7.95%	6.40%	
<b>2005</b>	<b>57.465</b>	<b>86.732</b>	<b>29.267</b>	<b>57.521</b>	<b>48.219</b>	<b>-9.302</b>	<b>114.986</b>	<b>134.951</b>	<b>19.965</b>
yearly change	12.44%	2.75%		9.30%	13.66%		10.85%	6.40%	
<b>2006</b>	<b>60.857</b>	<b>86.772</b>	<b>25.915</b>	<b>63.867</b>	<b>57.069</b>	<b>-6.798</b>	<b>124.724</b>	<b>143.841</b>	<b>19.117</b>
yearly change	5.90%	0.05%		11.03%	18.35%		8.47%	6.59%	
<b>2007</b>	<b>63.486</b>	<b>89.226</b>	<b>25.740</b>	<b>69.081</b>	<b>67.960</b>	<b>-1.121</b>	<b>132.567</b>	<b>157.186</b>	<b>24.619</b>
yearly change	4.32%	2.83%		8.16%	19.08%		6.29%	9.28%	
<b>2008</b>	<b>57.585</b>	<b>86.394</b>	<b>28.809</b>	<b>74.574</b>	<b>69.203</b>	<b>-5.371</b>	<b>132.159</b>	<b>155.597</b>	<b>23.438</b>
yearly change	-9.29%	-3.17%		7.95%	1.83%		-0.31%	-1.01%	
<b>Jan-Sept 2008</b>	<b>44.093</b>	<b>64.469</b>	<b>20.376</b>	<b>54.081</b>	<b>51.077</b>	<b>-3.004</b>	<b>98.174</b>	<b>115.546</b>	<b>17.372</b>
<b>Jan-Sept 2009</b>	<b>33.841</b>	<b>64.434</b>	<b>30.593</b>	<b>54.955</b>	<b>50.377</b>	<b>-4.578</b>	<b>88.796</b>	<b>114.811</b>	<b>26.015</b>
change on 08	-23.25%	-0.05%		1.62%	-1.37%		-9.55%	-0.64%	

Table updated on a quarterly basis.

Source: Central Statistics Office (CSO), Merchandise: Dec 2009 Release, Services: Balance of Payments Dec 2009

JC/AB Dec 2009



<b>Ireland's Top 20 Merchandise Categories in 2008</b>			
<b>EXPORTS</b>	<b>Year 2008 €Million</b>	<b>Rank</b>	<b>Percent of Total</b>
<b>Total Exports - Merchandise</b>	<b>86,394.39</b>		
Of which the following represent the top 20			
Organic chemicals (mainly for pharmaceutical sector)	17,815.80	1	21%
Medical & pharmaceutical products	16,750.47	2	19%
Computers	9,329.14	3	11%
Essential oils, perfume materials, toilet & cleansing preps	5,455.08	4	6%
Electronic Components & intergrated circuits	4,792.73	5	6%
Pacemakers, cds, dvds & other digital media	4,764.22	6	6%
Chemical materials and products	3,516.25	7	4%
Medical Devices	2,805.69	8	3%
Meat & Meat preparations	2,390.20	9	3%
Shannon Free Airport Trade & Unclassified Trade	1,964.58	10	2%
Infant foods & other misc. edible products & preparations	1,582.63	11	2%
Dairy products	1,441.89	12	2%
Telecommunications & sound equipment	1,318.45	13	2%
General industrial machinery& equipment & parts	1,211.14	14	1%
Spirits\Whiskey, Beer\Cider & other Beverages	1,161.72	15	1%
Contact Lenses & other optical goods	900.50	16	1%
Alumina, zinc & other ores and Scrap Metal	808.57	17	1%
Petroleum, petroleum products & related materials	757.09	18	1%
Certain other misc. products (incl. Estimates)	751.47	19	1%
Aircraft engines and parts	586.51	20	1%

Table updated on a quarterly basis.

Source: CSO, Merchandise: Dec 2009 Release

AB Dec 09

<b>Ireland's Top 10 Services Categories in 2008</b>			
<b>EXPORTS</b>	<b>Year 2008 (€million)</b>	<b>Rank</b>	<b>Percent of Total</b>
<b>Total Exports - Services</b>	<b>69,203</b>		
Of which the following represent the top 10			
Computer Services	23,284	1	34%
Trade Related Business Services	10,867	2	16%
Insurance	8,582	3	12%
Financial Services	6,850	4	10%
Operational Leasing	5,483	5	8%
Misc. Business Services <sup>1</sup>	5,049	7	7%
Tourism and Travel	4,279	6	6%
Transport	3,010	8	4%
Royalties/Licences	911	9	1%
Communications	525	10	1%
Other Services nes <sup>2</sup>	362	11	1%

<sup>1</sup> *'Misc. business services'*: 'Covers mainly advertising, research and development and inter-affiliate management charges'.

<sup>2</sup> *'Other services nes'*: includes 'Government services', 'Personal, cultural, & recreational services', 'Construction services' and 'Any other services transacted between residents & non residents'.

Table updated on a quarterly basis.

Source: CSO Services: Balance of Payments Dec 2009

AB/JC Dec 09

<b>Top 15 Merchandise Export Countries 2008</b>		
<b>Country</b>	<b>(€Million)</b>	<b>% of total</b>
USA	16,674.30	19%
Great Britain	14,300.00	17%
Belgium	12,253.14	14%
Germany	6,089.41	7%
France	5,019.36	6%
Spain	3,589.85	4%
Netherlands	3,028.41	4%
Italy	3,006.64	3%
Switzerland	2,560.81	3%
Japan	1,708.24	2%
China	1,609.28	2%
Northern Ireland	1,564.53	2%
Malaysia	1,062.97	1%
Sweden	873.93	1%
Poland	747.13	1%

Table updated on a quarterly basis.

Source: CSO, Merchandise: Dec 2009 Release

AB/JC Dec 2009

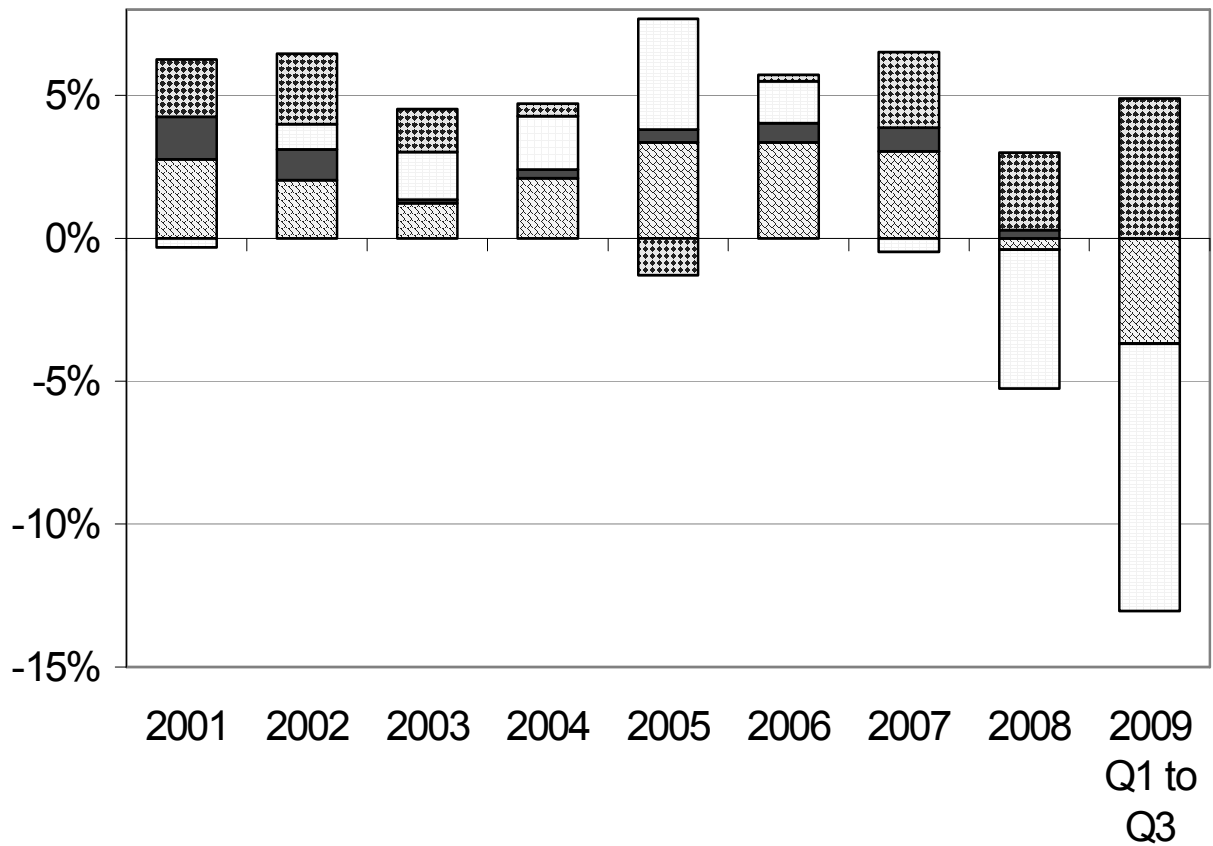
<b>Top 15 Service Export Countries 2008</b>		
<b>Country</b>	<b>€Million</b>	<b>% of Total</b>
United Kingdom	15,311	22%
Germany	6,850	10%
USA	4,913	7%
France	4,895	7%
Italy	4,514	7%
Netherlands	2,930	4%
Spain	2,166	3%
Switzerland	1,637	2%
Belgium	1,453	2%
Sweden	1,426	2%
China	1,423	2%
Russia	1,382	2%
Bermuda	1,102	2%
Japan	1,066	2%
Luxembourg	945	1%

Source: CSO Services Exports and Imports Release Dec 2009

AB/JC Dec 2009

Contribution of Net Exports to Irish Economic Growth, 2001-2009 Q3					
	Consumption	Government	Investment	Net Exports	GDP
2001	2.75%	1.49%	-0.32%	2.01%	6.20%
2002	2.03%	1.07%	0.88%	2.46%	6.47%
2003	1.23%	0.12%	1.67%	1.49%	4.51%
2004	2.10%	0.31%	1.86%	0.43%	4.70%
2005	3.35%	0.44%	3.88%	-1.29%	6.37%
2006	3.35%	0.68%	1.47%	0.21%	5.71%
2007	3.04%	0.83%	-0.48%	2.64%	6.03%
2008	-0.39%	0.29%	-4.87%	2.70%	-2.26%
2009 Q1 to Q3	-3.67%	-0.01%	-9.35%	4.89%	-8.14%

Contribution of Net Exports to Irish Economic Growth, 2001-2009 Q1-Q3



Consumption
  Government
  Investment
  Net Exports

## Key Exchange Rate Fluctuations which may Impact Trade Trends

<i>Euro (€) against Dollar (\$)</i>					
<i>Year on Year Rate Fluctuations</i>			<i>Year To Current Rate Fluctuations</i>		
1999	1.07		1999	Nov 2009	39%
2000	0.92	-14%	2000	Nov 2009	62%
2001	0.90	-2%	2001	Nov 2009	66%
2002	0.94	4%	2002	Nov 2009	59%
2003	1.13	20%	2003	Nov 2009	32%
2004	1.24	10%	2004	Nov 2009	20%
2005	1.24	0%	2005	Nov 2009	20%
2006	1.26	2%	2006	Nov 2009	18%
2007	1.37	9%	2007	Nov 2009	9%
2008	1.47	7%	2008	Nov 2009	1%
Nov 2009*	1.49	1%			

All Rates from Central Bank - Yearly Average Rates - except where denoted

\*Central Bank Monthly Average Rates

JCIAB Sept 2009

<i>Euro (€) against Pound Sterling (£)</i>					
<i>Year on Year Rate Fluctuations</i>			<i>Year To Current Rate Fluctuations</i>		
1999	0.66		1999	Nov 2009	36%
2000	0.61	-8%	2000	Nov 2009	48%
2001	0.62	2%	2001	Nov 2009	45%
2002	0.63	2%	2002	Nov 2009	43%
2003	0.69	10%	2003	Nov 2009	30%
2004	0.68	-1%	2004	Nov 2009	32%
2005	0.68	0%	2005	Nov 2009	32%
2006	0.68	0%	2006	Nov 2009	32%
2007	0.68	0%	2007	Nov 2009	32%
2008	0.80	18%	2008	Nov 2009	13%
Nov 2009*	0.90	13%			

All Rates from Central Bank - Yearly Average Rates - except where denoted

\*Central Bank Monthly Average Rates

JCIAB Dec 2009